



KITTIWAKE

HIGH-PERFORMANCE AZIMUTH STERN DRIVE TUG

GENERAL

Classification	Bureau Veritas I✕HULL✕MACH Fire-fighting Escort Tug - Unrestricted Navigation
Flag	British
Owner	Targe Towing Limited
Builder	Sanmar
Built	20818
Fire-Fighting	Full FiFi 1 (2400 m3/hr)

DIMENSIONS

Length overall	24.40m
Beam overall	11.25m
Max Draught	5.5m
Gross tonnage	217t

PERFORMANCE

Bollard pull	62t
Max Speed	12 kn

PROPULSION SYSTEM

Main engines	2 x Catapillar 3512c
Total power	3528kw (4731bhp) at 1600rpm
Azimuth thrusters	Rolls Royce US 205 FP
Propeller Diameter	2400mm

TANK CAPACITIES

Fuel Oil	74.00 m3
Fresh Water	22.40 m3
Foam	4.40 m3
Ballast Water	31 m3

AUXILIARY EQUIPMENT

Generator sets	2 x Caterpillar C4.4 400v 107KVA 50Hz
----------------	---------------------------------------

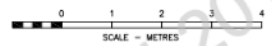
DECK EQUIPMENT

Fore Winch	DMT TW-H250kN 1870kN Brake Split Drum
Tow Hook	Data Hidrolic DTH 70-130P SWL 700kN (70t)
Capstan	Data Hidrolic DHC 5000 SWL 50kN (5t)

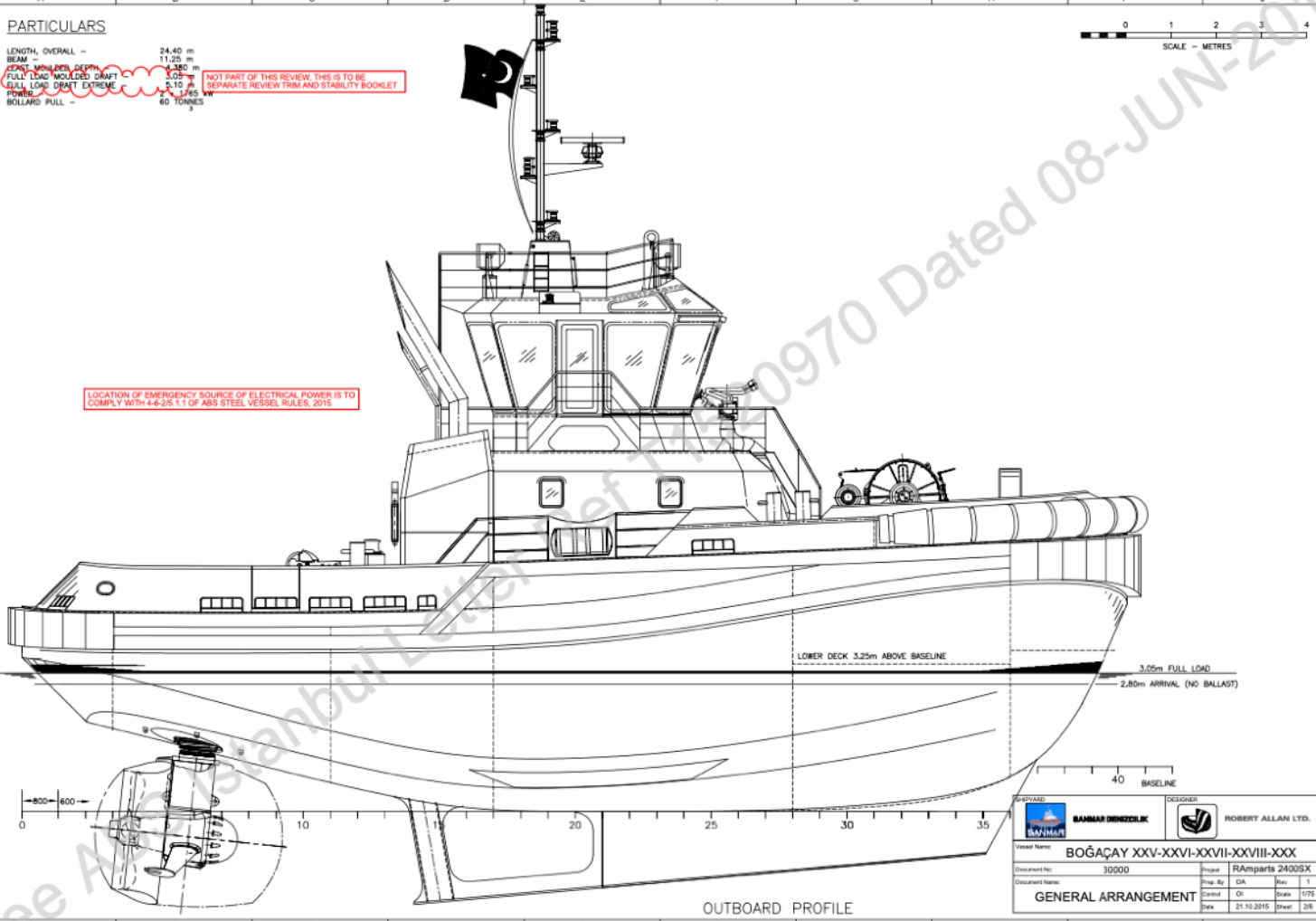
PARTICULARS

LENGTH OVERALL = 24.40 m
 BEAM = 11.25 m
 DEPTHS: MAIN DECK = 4.280 m
 FULLY LOAD MOLDED DRAFT = 3.050 m
 FULL LOAD DRAFT EXTREME = 5.10 m
 POWER: 2 X 1165 kW
 BOLLARD PULL = 80 TONNES

NOT PART OF THIS REVIEW, THIS IS TO BE SEPARATE REVIEW TRIM AND STABILITY BOOKLET

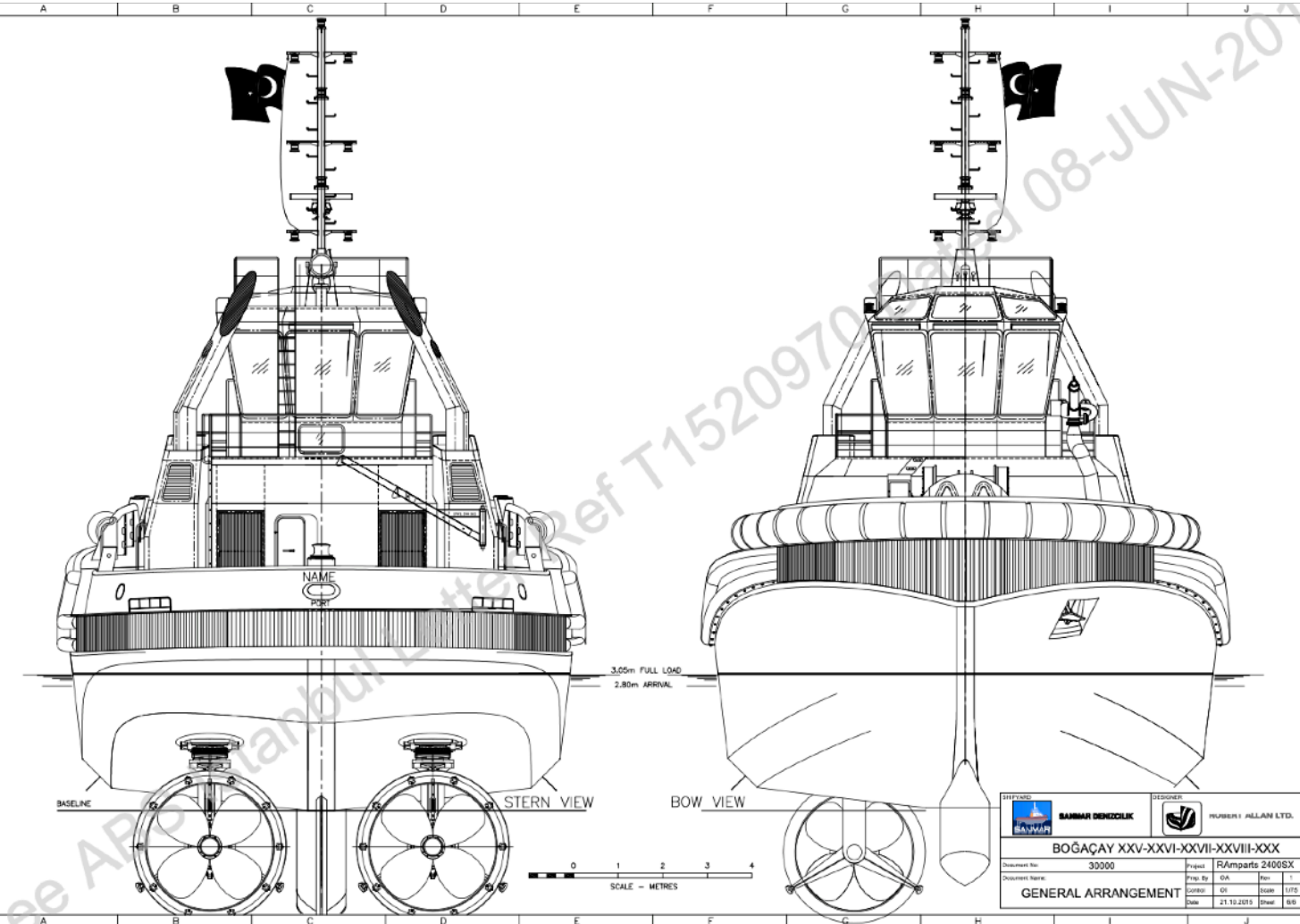


LOCATION OF EMERGENCY SOURCE OF ELECTRICAL POWER IS TO COMPLY WITH 4-6-2/5.1.1 OF ABS STEEL VESSEL RULES, 2015.



OUTBOARD PROFILE

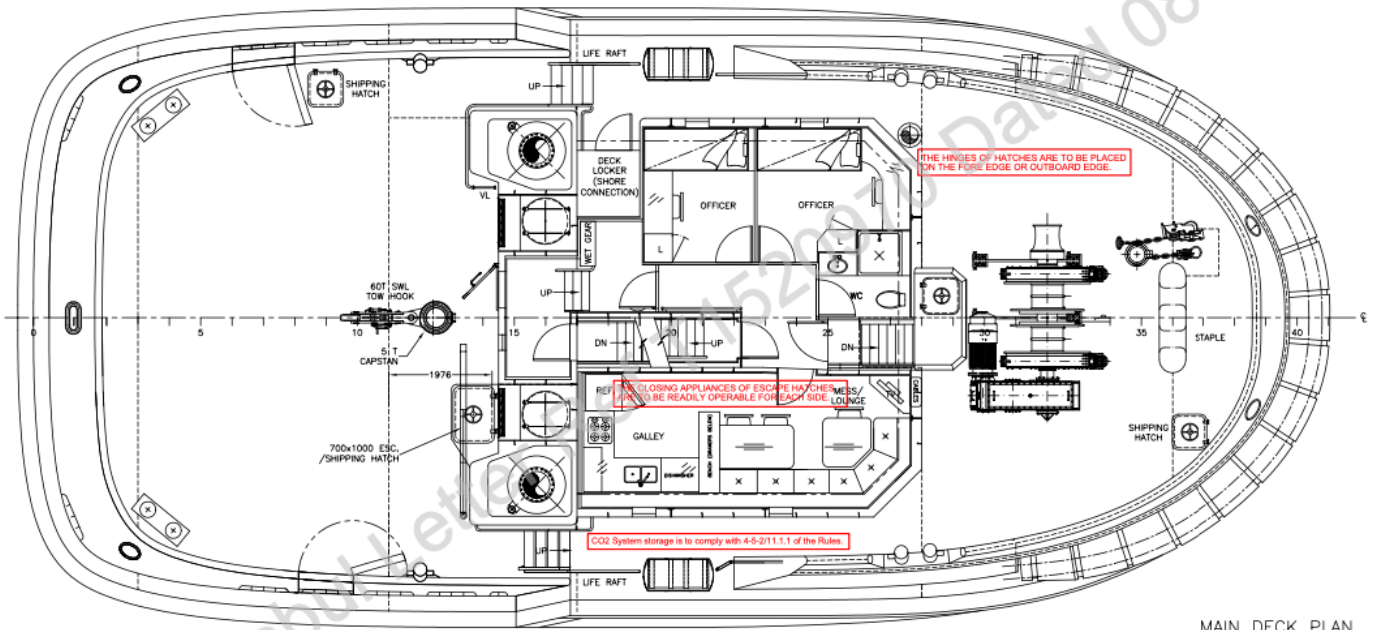
Project Name: BOĞAÇAY XXV-XXVI-XXVII-XXVIII-XXX			
Document No: 30000		Project: R/Amparts 2400SX	
Prepared By: DA		Rev: 1	
Checked By: DA		Scale: 1/75	
Date: 21.10.2015		Sheet: 2/5	
GENERAL ARRANGEMENT			



SCALE - METRES

Project Name: BOĞAÇAY XXV-XXVI-XXVII-XXVIII-XXX			
Document No: 30000		Project: R/Amparts 2400SX	
Prepared By: DA		Rev: 1	
Checked By: DA		Scale: 1/75	
Date: 21.10.2015		Sheet: 3/5	
GENERAL ARRANGEMENT			



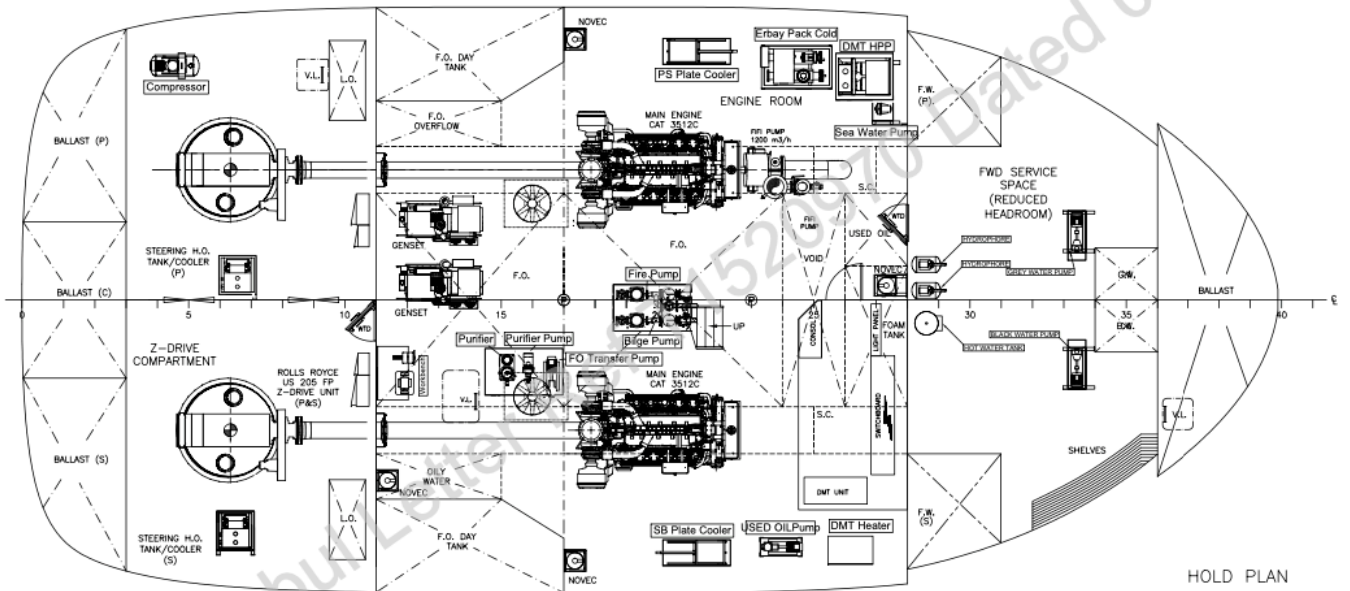


MAIN DECK PLAN

The closing appliances of escape openings are to be of a type that is operable from each side. The maximum force needed to open the hatch cover is not to exceed 150 N (15.3 kgf, 33.7 lbf). The use of a spring equalizing, counterbalance or other suitable device on the hinge side to reduce the force needed for opening is acceptable, in accordance with 3-2-12/23.5 of the Rules.



SINMAR		ROBERT ALLAN LTD.	
Vessel Name: BOĞAÇAY XXV-XXVI-XXVII-XXVIII-XXX			
Document No:	30000	Project:	RAMparts 2400SX
Document Name:	GENERAL ARRANGEMENT	Prep. By:	OA
		Control:	Ol
		Date:	21.10.2016
		Scale:	1/75
		Sheet:	4/6



HOLD PLAN

Water-tight doors are to be provided with means of indication locally and on the bridge whether they are open or closed. A notice is to be affixed to each of each closing appliance to the effect that is not to be left open.



SINMAR		ROBERT ALLAN LTD.	
Vessel Name: BOĞAÇAY XXV-XXVI-XXVII-XXVIII-XXX			
Document No:	30000	Project:	RAMparts 2400SX
Document Name:	GENERAL ARRANGEMENT	Prep. By:	OA
		Control:	Ol
		Date:	21.10.2016
		Scale:	1/75
		Sheet:	5/6

