



INCHCOLM

Damen 2312 Next Gen Twin Fin Tug

GENERAL

Classification	Bureau Veritas I✕HULL✕MACH Escort Tug - Unrestricted Navigation
Flag	British
Owner	Targe Towing Limited
Built	2020

DIMENSIONS

Length overall	22.8m
Beam overall	12.03m
Max Draught	5.7m
Gross tonnage	262t

PERFORMANCE

Bollard pull	70t
Max Speed	12.2kn

PROPULSION SYSTEM

Main engines	Caterpillar 3512c TA HD/D
Total power	3804kw (5102bhp) at 1800rpm
Azimuth thrusters	Rolls Royce US 205S
Propeller diameter	2800mm

TANK CAPACITIES

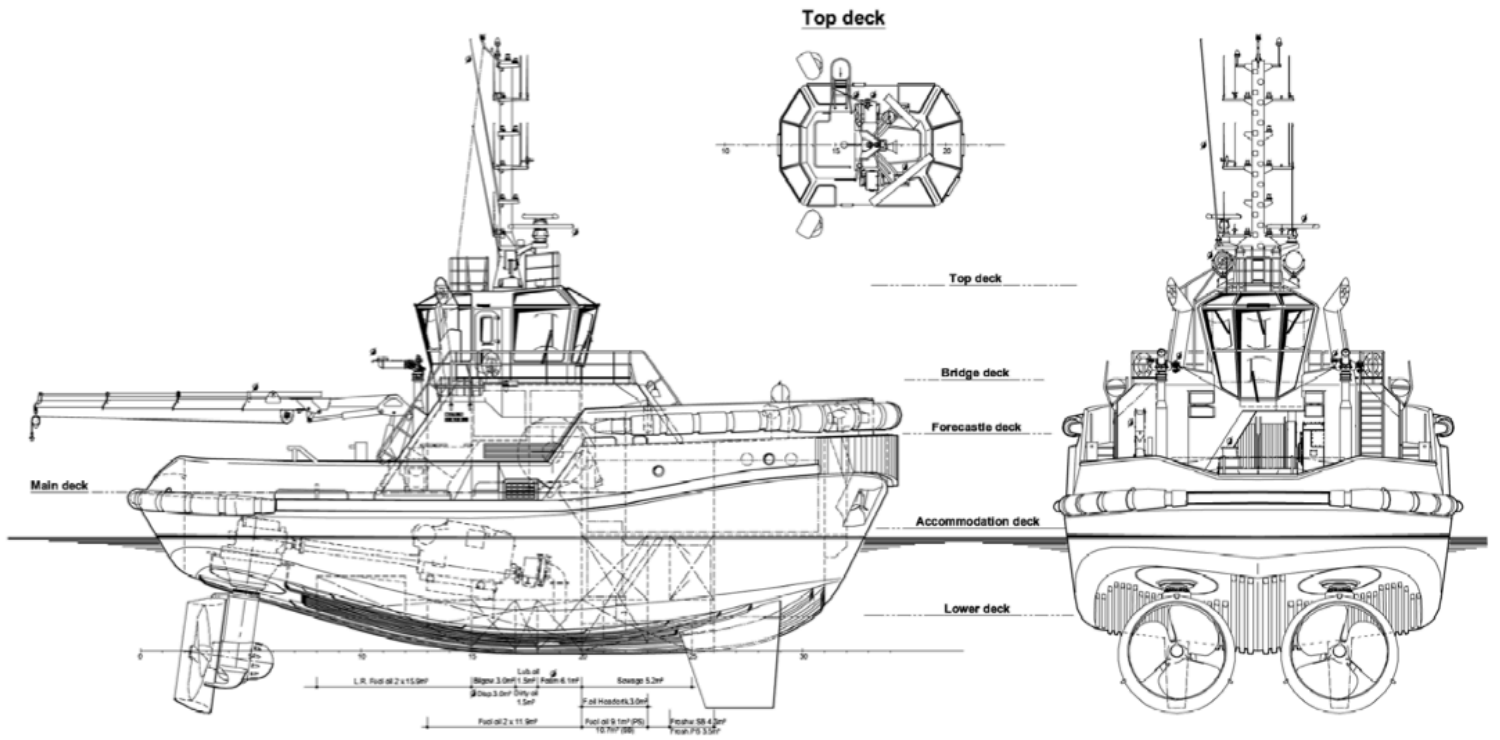
Fuel Oil	78.4 m3
Fresh Water	7.80 m3

AUXILIARY EQUIPMENT

Generator sets	2 x Caterpillar C4.4 TA, 230/400 V, 100 kVA, 50 Hz
----------------	--

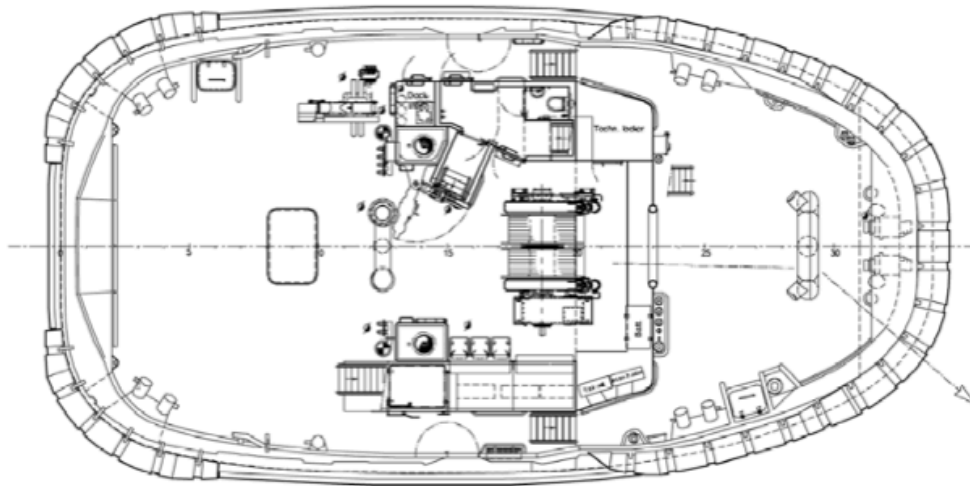
DECK EQUIPMENT

Main Towing Winch	DMC Hydraulic driven escort winch 175t brake holding force. Split independent drums.
Tow Hook	Mampaey SWL 750kn 75t
Capstan	Electrically driven 5t at 15m/min

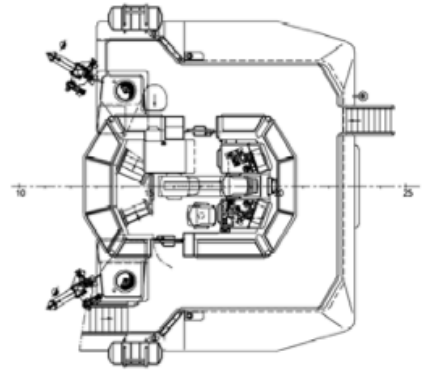


Main deck

Forecastle deck

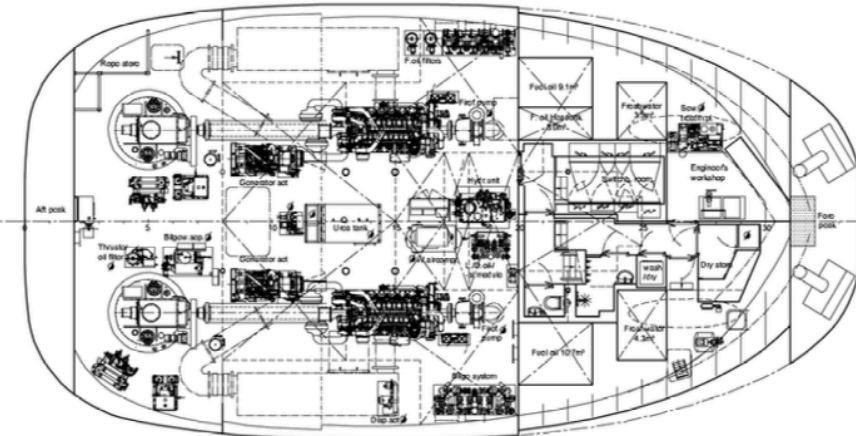


Bridge deck



Below Main deck

Lower deck



Accommodation deck

