



CRAIGLEITH

HIGH-PERFORMANCE AZIMUTH STERN DRIVE TUG

GENERAL

Classification	Bureau Veritas I✕HULL✕MACH Fire-fighting Escort Tug - Unrestricted Navigation
Flag	British
Owner	Targe Towing Limited
Built	2017
Fire-Fighting	Full FiFi 1 (2800 m3/hr)

DIMENSIONS

Length overall	28.2m
Beam overall	12.6m
Max Draught	5.52m
Gross tonnage	461t

PERFORMANCE

Bollard pull	70t
Max Speed	13.2 kn

PROPULSION SYSTEM

Main engines	MTU 16V 4000 M63
Total power	4000kw (5364bhp) at 1800rpm
Azimuth thrusters	Schottel SRP 1515 FP Rudderpropeller
Propeller diameter	2700mm

TANK CAPACITIES

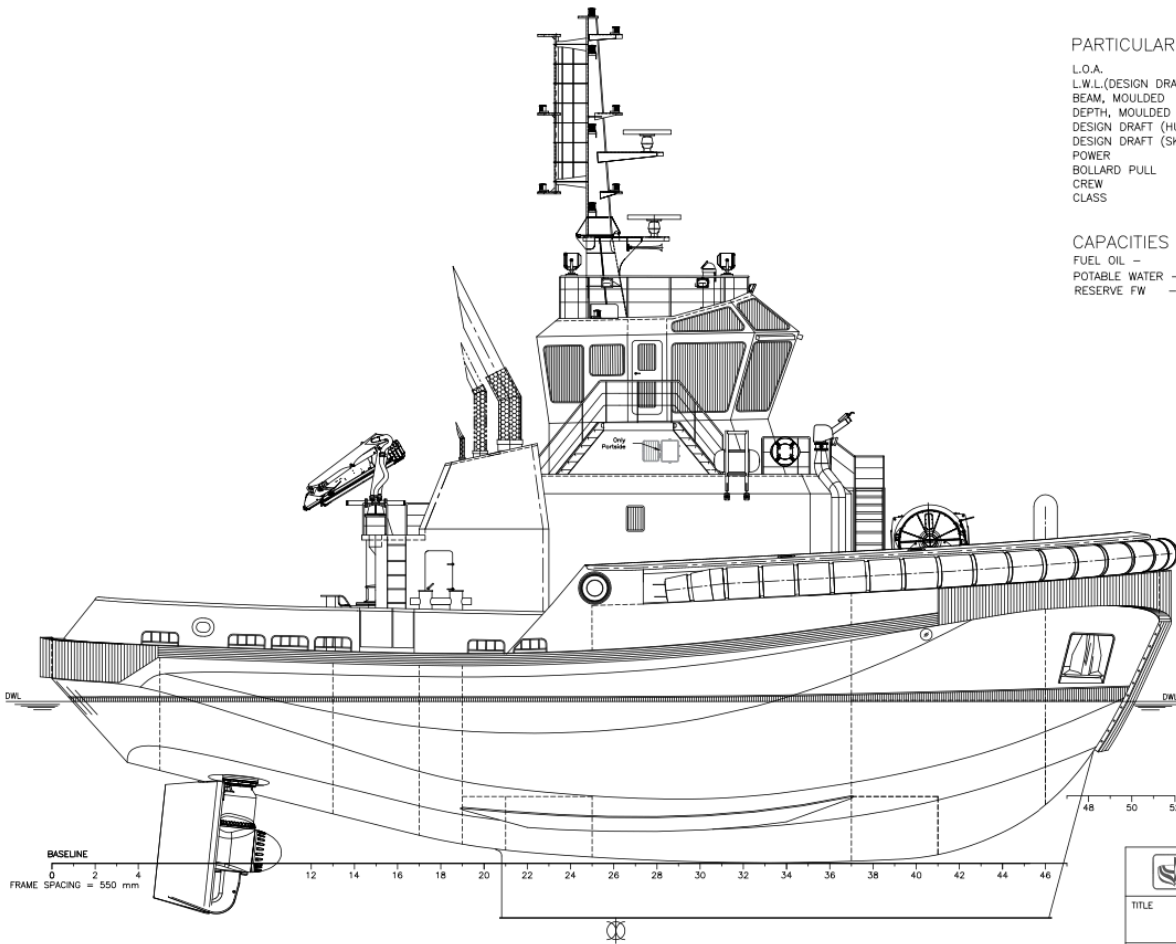
Fuel Oil	111.00 m3
Fresh Water	13.50 m3
Foam	4.10 m3
Ballast Water	35.80 m3

AUXILIARY EQUIPMENT

Generator sets	2 x Caterpillar C4.4 TA, 230/400 V, 107 kVA, 50 Hz
----------------	--

DECK EQUIPMENT

Fore Winch	DMT TW 020-300kN Hydraulic driven escort winch 175t brake holding force. Split independent drums
Tow Hook	Data Hidrolic DTH 100-151P 700kN (70t)
Capstan	Data Hidrolic DHC 5000 SWL 50kN (5t)



PARTICULARS

L.O.A. 28.2 m
 L.W.L.(DESIGN DRAFT) 26.74 m
 BEAM, MOULDED 12.6 m
 DEPTH, MOULDED 5.3 m
 DESIGN DRAFT (HULL) 4.12 m
 DESIGN DRAFT (SKEG) 5.52 m
 POWER 2 x 2000 kW
 BOLLARD PULL 70 TONNES
 CREW 8 PERSONS
 CLASS ABS, A1, AAMS, ABCU, TOWING VESSEL
 UNRESTRICTED SERVICE, UWILD
 FI-FI 1(READY)

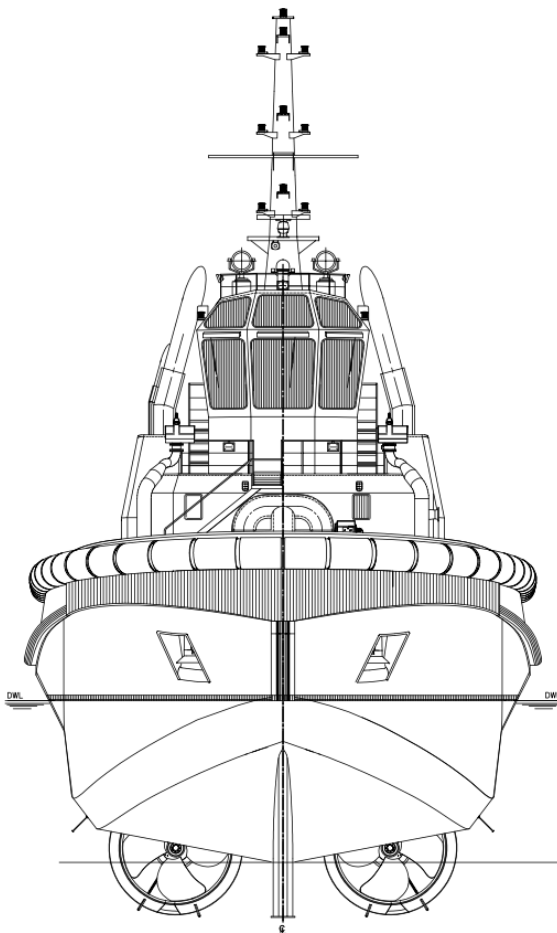
CAPACITIES

FUEL OIL - 111,000 L
 POTABLE WATER - 13,500 L
 RESERVE FW - 35,800 L

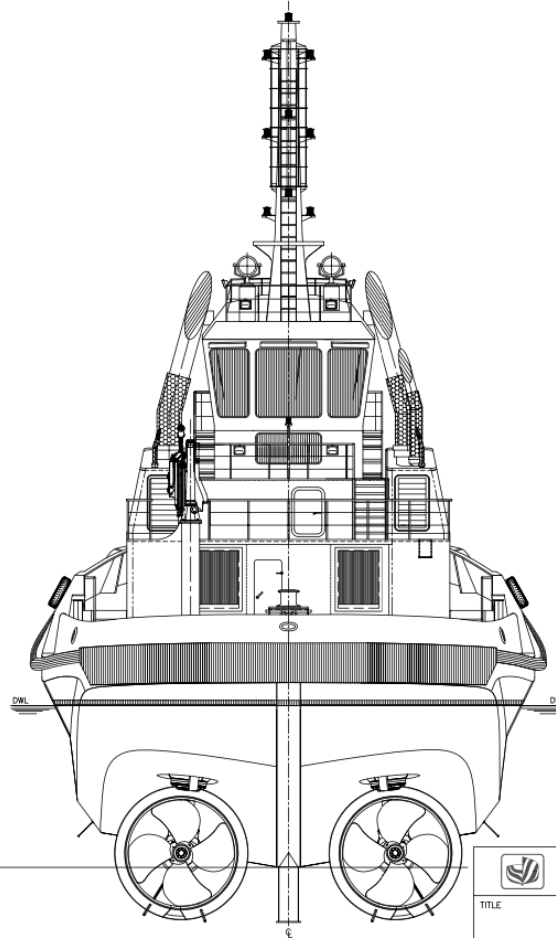


ROBERT ALLAN LTD.

TITLE		GENERAL ARRANGEMENT TERMINAL XXI, H91		
SCALE	DATE	PLOT SIZE	SHEET	
1:100	AUG. 5/15	ANSI B	2 OF 5	
PROJECT No.	DRAWING No.	REV.		
215-046	30000	16		



FWD VIEW



AFT VIEW



ROBERT ALLAN LTD.

TITLE		GENERAL ARRANGEMENT TERMINAL XXI, H91		
SCALE	DATE	PLOT SIZE	SHEET	
1:100	AUG. 5/15	ANSI B	5 OF 5	
PROJECT No.	DRAWING No.	REV.		
215-046	30000	16		



